



SYNTON-TECH CORPORATION
ALUMINUM POWER RESISTORS

File No.:	AH-02-C
Version:	A
Page:	1/6
Date:	2021.01.01

1. FEATURE

- High power rating, small size and ultra precision.
- Standard winding & non-inductive winding types.
- High stability, strong construction.

2. MATERIALS

- Encapsulant: Silicone
- End caps: Stainless steel
- Core: Ceramic steatite or alumina
- Housing: Aluminum with hard anodic coating
- Element: Copper-nickel alloy, nickel-chrome alloy or Manganese copper

APPROVED	CHECKED	DESIGNED	REMARK	DOCUMENT NO.
Carol	May	Chen		0201010487



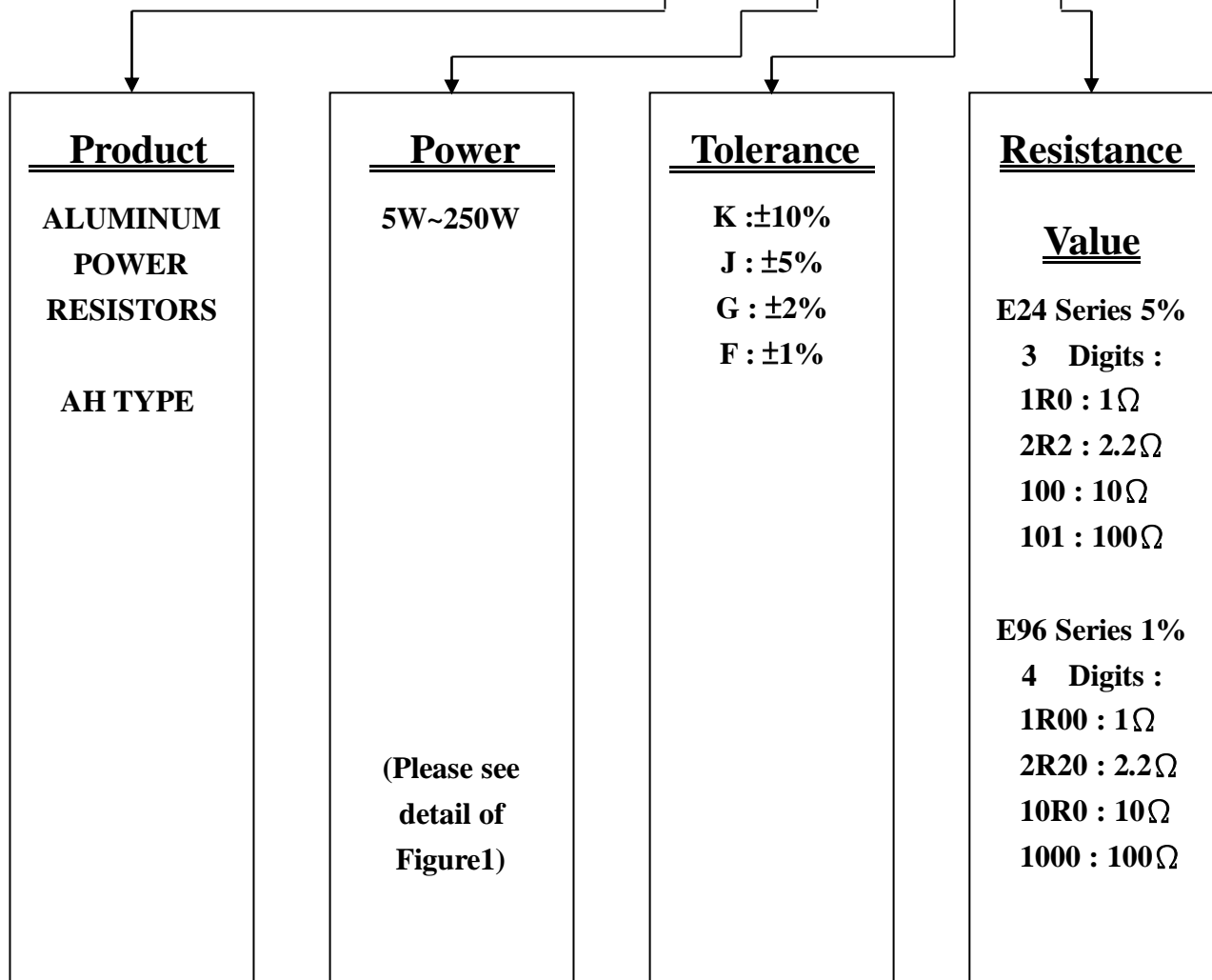
SYNTON-TECH CORPORATION
ALUMINUM POWER RESISTORS

File No.:	AH-02-C
Version:	A
Page:	2/6
Date:	2021.01.01

3. EXPLANATIONS OF ORDERING CODE

Example : DESCRIPTION : AH 15W 5% 4.7Ω

SYNTON CODE : AH 15W J 4R7





SYNTON-TECH CORPORATION
ALUMINUM POWER RESISTORS

File No.:	AH-02-C
Version:	A
Page:	3/6
Date:	2021.01.01

4. ELECTRICAL CHARACTERISTICS

TYPE	AH-5	AH-10	AH-25	AH-50	AH-85	AH-100S	AH-100	AH-250
Wattage Rating	5W	10W	25W	50W	85W	100W	100W	250W
Power Rating Load	$\Delta R/R \leq \pm (1\% + 0.05\Omega)$							
Short-Time Overload	$\Delta R/R \leq \pm (0.5\% \pm 0.05\Omega)$							
Insulation Resistance	DC500V 1000M Ω min.							
Dielectric Withstanding Voltage	$\Delta R/R \leq \pm (0.2\% + 0.05\Omega)$ AC2000V 1 minute							
Temperature Coefficient of Resistance	$\pm 260\text{ppm}/^\circ\text{C}$ MAX.							

Figure 1

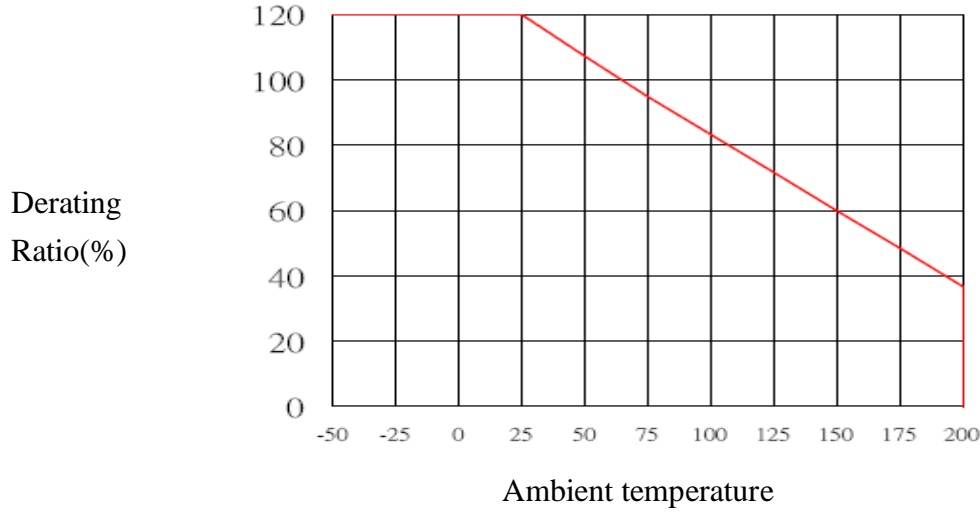


SYNTECH CORPORATION

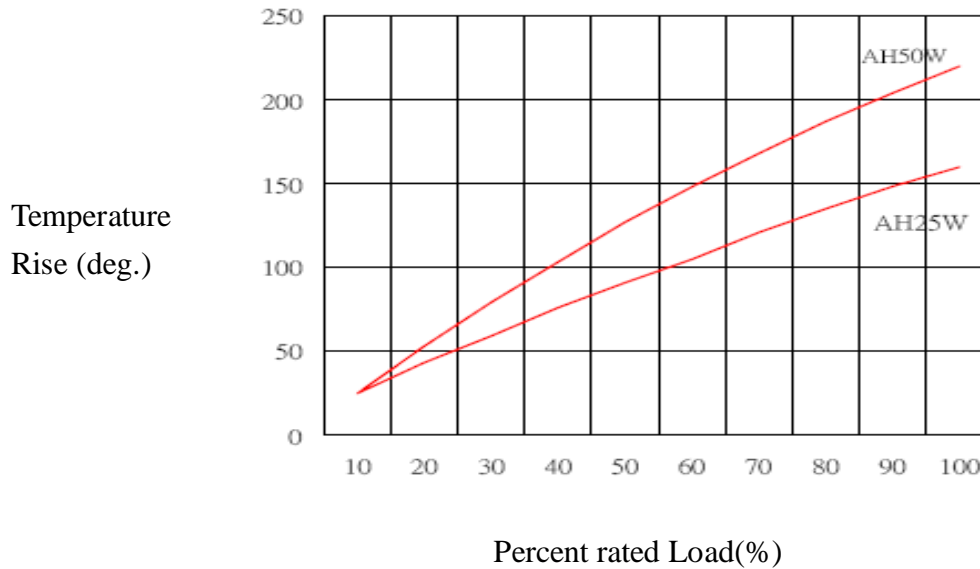
ALUMINUM POWER RESISTORS

File No.:	AH-02-C
Version:	A
Page:	4/6
Date:	2021.01.01

Power Derating Curve



Temperature Rise Curve





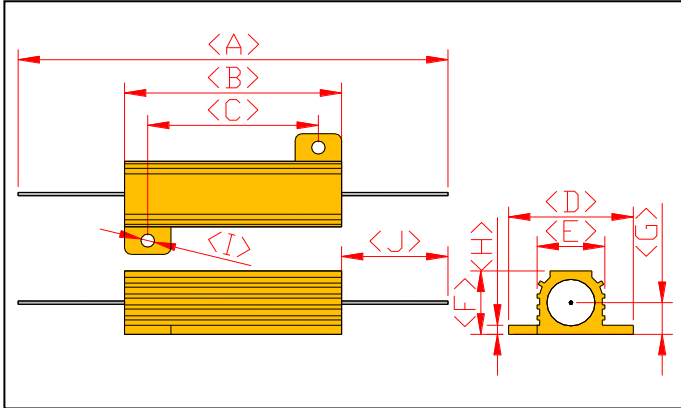
SYNTON-TECH CORPORATION

ALUMINUM POWER RESISTORS

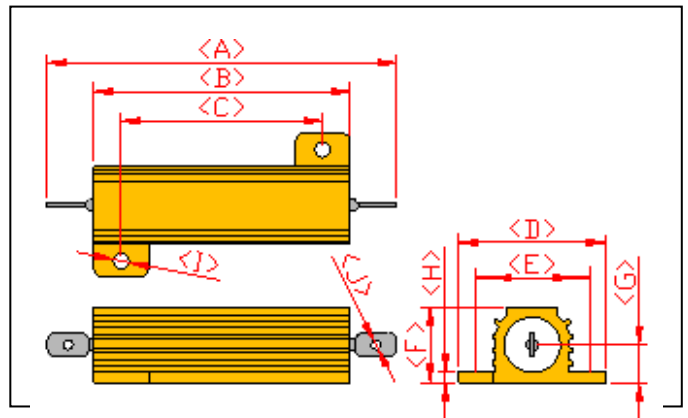
File No.:	AH-02-C
Version:	A
Page:	5/6
Date:	2021.01.01

5. DIMENSIONS

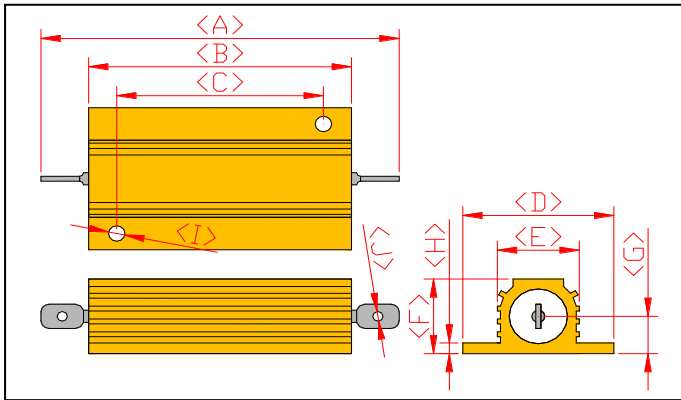
◆ A Type



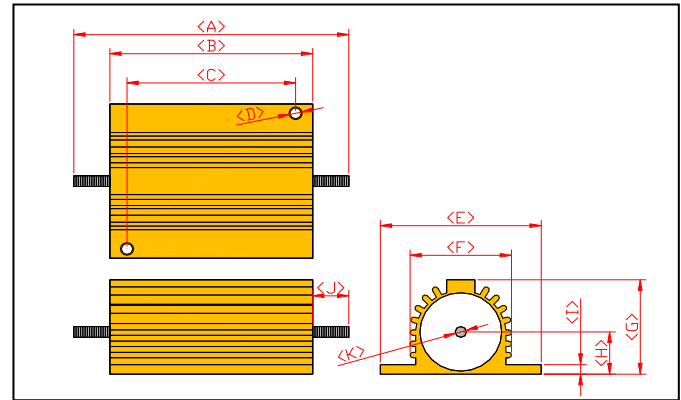
◆ B Type



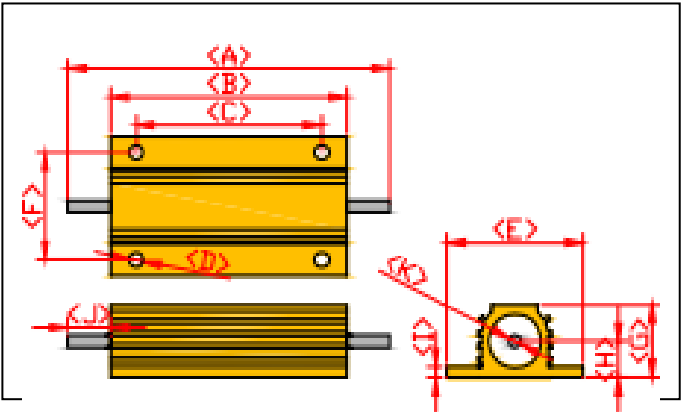
◆ C Type



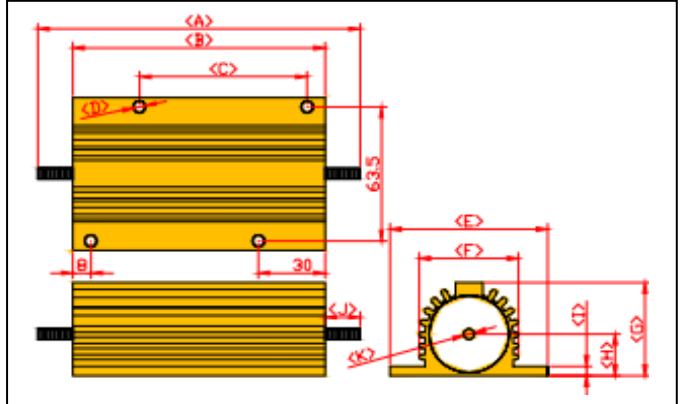
◆ D Type



◆ E Type



◆ F Type





SYNTON-TECH CORPORATION

ALUMINUM POWER RESISTORS

File No.:	AH-02-C
Version:	A
Page:	6/6
Date:	2021.01.01

定格電力 (W) Power Rating	尺寸 Dimensions (mm)											型式 Type	電阻值範圍 Resistance range
	A±2.5	B±1	C±1	D±0.5	E±1	F±1	G±1	H±0.5	I±0.2	J±1.5	K±0.2		
AH-5W	82	15.3	11.3	16.5	9.4	8	4	1.4	2.2	33	-	A	0.01~5K
AH-10W	31.6	18.7	14.3	20.4	16.7	10	5	2	2.2	2.2	-	B	0.01~10K
AH-25W	48	27.8	18.6	27.4	20	14.8	7.7	2	3.4	2.2	-	B	0.01~25K
AH-50W	70	51	38.5	29.4	22.9	15.8	7.7	2.4	4.2	2.2	-	B	0.01~50K
AH-85W	94	75	38.5	29.4	14.4	15.8	7.7	2.4	3.2	2.2	-	C	0.01~85K
AH-100WS	98	66	35	4.5	47	36	25	13	3.2	15	M4	E	0.01~100K
AH-100W	122	90	69.2	5.2	71.5	45	44	20±1	4.4	16	M6	D	0.01~100K
AH-250W	178	114	76	5.2	77	57.8	54.5	25±1	5	32	M6	F	0.01~100K

**REMARK: Dimensions "K" is Screw Diameter.

Figure 2